

DOWNLOAD BIM FILES AT

 [BRICKS.COM](https://www.bimbricks.com)

BIM User Guide

Version 3.0 . Revit 2013 . 2019
Michelmersh Brick Holdings PLC

System families - Michelmersh Brick Holdings PLC - wall, floor and roof types

Thank you for downloading MBH PLC wall or floor system families. In this download you will find a Revit project containing the brick or paver product in an individual wall or floor family, downloaded from mbhplc.co.uk.

The folder contains the following files relevant to the family.

- *.rfa project file containing the wall or floor type along with a sheet containing relevant metadata related to the product and family.
- *.txt file containing the shared parameter file related to the MBH PLC family types.
- *.jpeg files containing textures and sample panels of the product.
- *.ifc file with fully certified export based on the latest IAI IFC2x3 data exchange standard.
- *.pdf material take-off sheet including all relevant metadata for each product or type.
- *.pdf User Guide

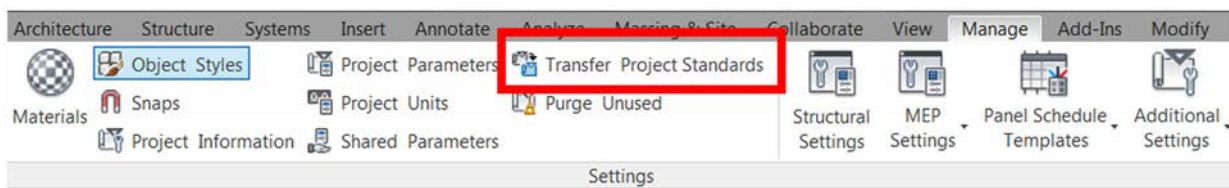
Transferring Wall, Floor or Roof Parameters

Before doing anything with this file, it is necessary that the user be aware that there is a large amount of built in metadata which needs to be brought into any project that the wall is required in.

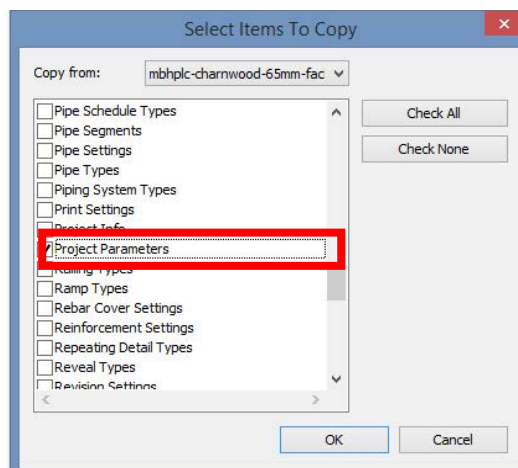
A large number of parameters, including a number of COBie parameters, are built into the wall, or floor at both family type and material level.

In order for these parameters to be brought across to the required project, the following method should be used:

1. Navigate to the project you wish to copy the wall or floor to.
2. Under the Manage tab on the ribbon, select 'Transfer Project Standards'.



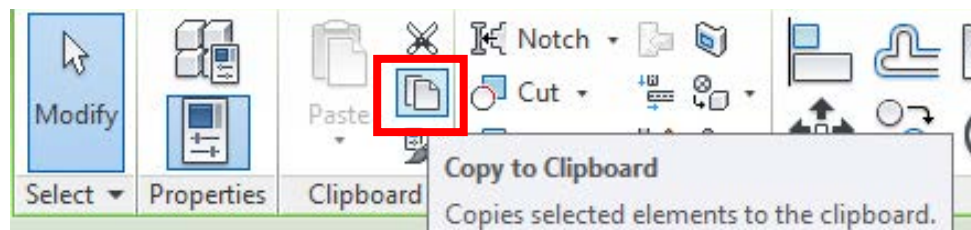
3. Ensure you have the MBH PLC project selected in the 'Copy from' drop down list at the top and then scroll down and select 'Project Parameters' in the list. Click OK and this will bring across all the parameters that are relevant to the wall or floor product family.



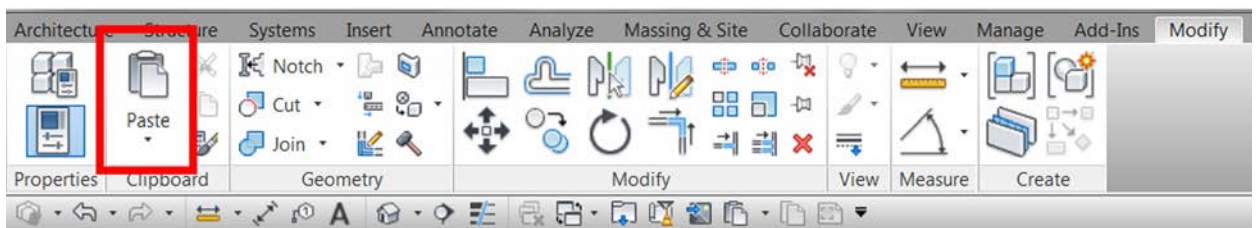
Loading the component into your project

You can now load the MBH PLC wall or floor into your project using the following method:

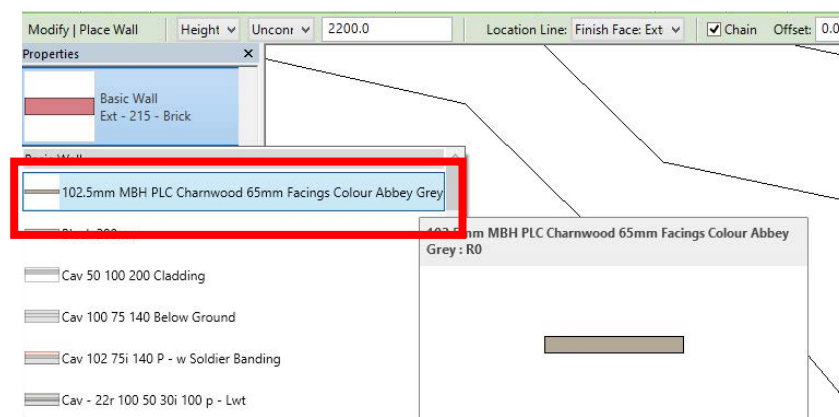
1. Open the Revit file containing your 'project' and navigate to an appropriate plan view.
2. Open the Revit file you have downloaded from mbhplc.co.uk containing the wall or floor type that you want to place in your project.
3. Navigate to the 'Product-Plan' view in the MBH PLC project then select the component.
4. On the Ribbon, select the Modify tab then click the 'Copy' button.



5. Switch back to your 'project' and in the plan view you have open, on the Modify tab select the 'Paste' button and left click in the model space to paste the wall or floor type. This will bring across the component, material and metadata to your project.



6. You can now delete this instance of the wall or floor and access them from the Architecture tab under the wall or floor tools as and when required.



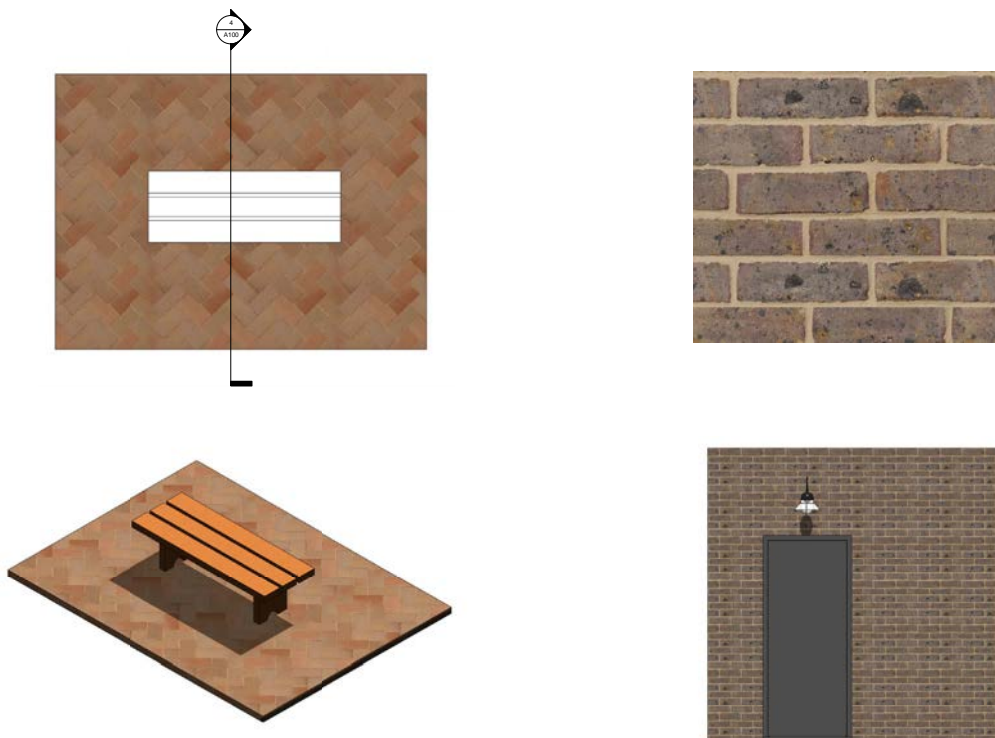
Material textures - loading the texture library

These families contain manufacturer specific render materials. Revit will try and find these materials on your computer in the following directory:

C:\LocalRVT\Bimstore\Materials\MBH_PLC

The first time you use these files you will need to copy the images contained in the brick or paver folder that you downloaded, in to the 'MBH_PLC' folder above (you may need to create the folder structure if you have not used MBH PLC components with custom materials before).

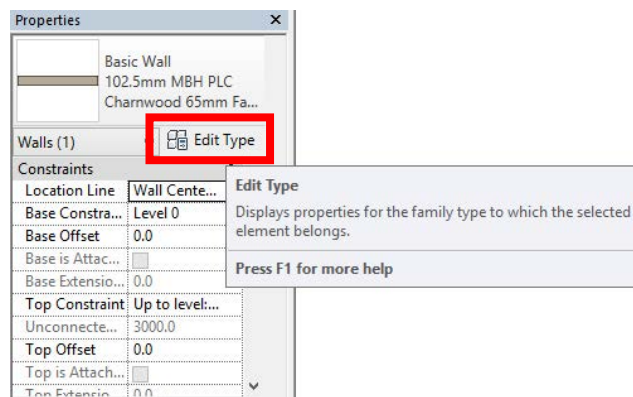
The MBH PLC texture will now load the custom render finishes from this location.



MBH PLC manufacturer specific data

The MBH PLC families contain a host of technical and manufacturer specific data to assist the user when building up their project or when scheduling.

To access the data embedded into the families, simply select the desired component and click the 'Edit Type' button at the head of the 'Properties' tab.



| Type Properties | |
|-------------------------------|---|
| Family: | System Family: Basic Wall |
| Type: | 102.5mm MBH PLC Charnwood 65mm Facings Colour Abbey Grey |
| Type Parameters | |
| Parameter | Value |
| Construction | |
| Structure | Both Edit... |
| Wrapping at Inserts | Both |
| Wrapping at Ends | None |
| Width | 102.5 |
| Function | Exterior |
| Graphics | |
| Materials and Finishes | |
| Structural Material | Masonry MBH PLC Charnwood 65mm Facings Colour Abbey Grey |
| Identity Data | |
| Keynote | F10/110 |
| Model | MBH PLC Charnwood 65mm Facings Colour Abbey Grey |
| Manufacturer | Michelmersh Brick Holdings PLC |
| Type Comments | Group 1 Frogged HD Clay Facing Brick |
| URL | www.mbhplc.co.uk/bim |
| Description | Brick |
| Assembly Description | Ext. Wall - Brick (Single Wythe) |
| Assembly Code | B2010150 |
| Type Mark | HB-0001-ABBG-FT-B-1C |
| Fire Rating | Class A1 |
| Cost | |
| ManufacturerTelephone | 0844 931 0022 |
| ManufacturerAddress | Michelmersh Brick Holdings PLC, Freshfield Lane, Danehill, Sussex, RH17 7HH |
| Analytical Properties | |
| General | |
| Data | |
| DimensionSize | 215x102.5x65 mm |
| ProductShape | Rectangular Prism |
| ProductMaterial | Fired Clay |
| ProductReferencedStandard | EN771-1 |
| ProductColor | Grey |
| ProductFinish | Handmade Sand Faced |
| ClassificationValueUniclass2 | Pr_20_93_52_15 |

To view all parameters associated with the product, click the edit button under the construction heading, open the material browser and click on the custom parameters icon at the bottom of the window to open the 'Material Parameters'.

| Edit Assembly | | | |
|------------------|--|--|---------------|
| Family: | Basic Wall | | |
| Type: | 102.5mm MBH PLC Charnwood 65mm Facings Colour Abbey Grey | | |
| Total thickness: | 102.5 | | |
| Resistance (R): | 0.2092 (m ² ·K)/W | | |
| Thermal Mass: | 13.20 kJ/K | | |
| Layers | | | |
| | Function | Material | EXTERIOR SIDE |
| 1 | Core Boundary | Layers Above Wrap | 0.0 |
| 2 | Structure [1] | Masonry MBH PLC Charnwood 65mm Facings Colour Abbey Grey | 102.5 |
| 3 | Core Boundary | Layers Below Wrap | 0.0 |



| Material Parameters | |
|-----------------------------|--------------------------------------|
| Parameter | Value |
| Data | |
| Configuration | Group 1 Frogged HD Clay Facing Brick |
| DensityTolerance | D1 |
| DangerousSubstances | N/A |
| WaterAbsorption | 17.0% |
| Plant | CHARNWOOD |
| Durability | F2 |
| InitialSuctionRate | 2.7 |
| CompressiveStrength | 25.0 (N/mm ²) |
| GrossDryDensity | 1600 (kg/m ³) |
| DimensionalTolerance | T2 |
| DimensionalRange | R1 |
| NettDryDensity | 1650 (kg/m ³) |
| CompressiveStrengthCategory | II |
| IndividualUnitDimension | 215x102.5x65 mm |
| ReactionToFire | Class A1 |
| SolubleSaltsCategory | S2 |
| SolubleSaltsMg | <0.01 |
| SolubleSaltsNaK | <0.01 |
| ThermalConductivityP90 | 0.49 |
| ThermalConductivityP50 | 0.43 |
| WaterVapourPermeabilityCoef | S/10 |
| Other | |
| WarrantyDurationLabor | |
| DocumentationCertificates | |
| Features | |
| Constituents | Fired Clay |
| CreatedBy | Michelmersh Brick Holdings PLC |
| ReferencedStandard | EN771-1 |
| SpareParts | |
| ExpectedLife | 100 |
| AssetIdentifier | |
| DocumentationTechnical | www.mbhplc.co.uk/bim |

All this information including NBS and COBie parameters can be scheduled, including URL links direct to MBH PLC and to documentation links of the particular product.

You will see all relevant product parameters featured on the 'Material Take-Off Sheet' which is provided inside the project and as a pdf export inside the downloaded product folder.

Other notes

You can add these wall and floor components to your company template file, they will then be available without loading when starting a new project.

Revisions

Version 3.0 - Material Textures and Parameters Updated.

V3 files are compliant with the following standards: BS8501 (all parts) BS1192-4 (COBie)



BIM User Guide

Michelmersh Brick Holdings PLC
Freshfield Lane
Danehill
Haywards Heath
Sussex
RH17 7HH